



# TINA MÜLLER



# TINA MÜLLER

## PAINTINGS

April 9 - 26, 2025

**ARTIFACT**  
P R O J E C T S

# The Visionary Worlds of Tina Müller

by David Zimmerman

Tina Müller’s artistic vision is drawn equally from the world of lived experience and that of the imagination. Her work ranges from intensely personal, even privately joyful in nature, to the phantasmagoric. Her paintings investigate the contemporary world sensed through our understanding of the fragile and the contingent. Her pictorial imagery, clearly, traces a long arc.

We can trace elements that are modern in content but traditional in execution. In this way the artist recalls many of the pioneering efforts of outsider artists who emphasized a dramatic line of work in the service of presenting narratives of social nature. This work is rooted in an inquiry in the role of social forces as they direct man’s inner and outer life away from the known and the representable. The impetus to this way of thinking is a result of Tina Müller’s interest in the symbolic language. The artist has incorporated the various facets of her personality through the growing awareness that a paradigmatic state of internal contradiction resides in all significant art. She has managed to combine the light and the dark side of present life in her paintings.

Tina Müller’s works are remarkable images which contain spaces that refer to primary temporality seen as a dynamic unity whose dimensions overlap one another while never co-inciding. Her paintings suggest that she has given great care to recognize that questions leading to subjectivity and non-coincidence immediately introduces our awareness that time guarantees its openness to the very condition which allows for shared participation in the common creating of meaning. What we can all share in the viewing of this work is an artist engaged in the process of creation whose very subject is reflections on matters that preoccupy all of us. This self-referencing engagement on the part of the artist leads the viewer to a space of paradox and wonderment.

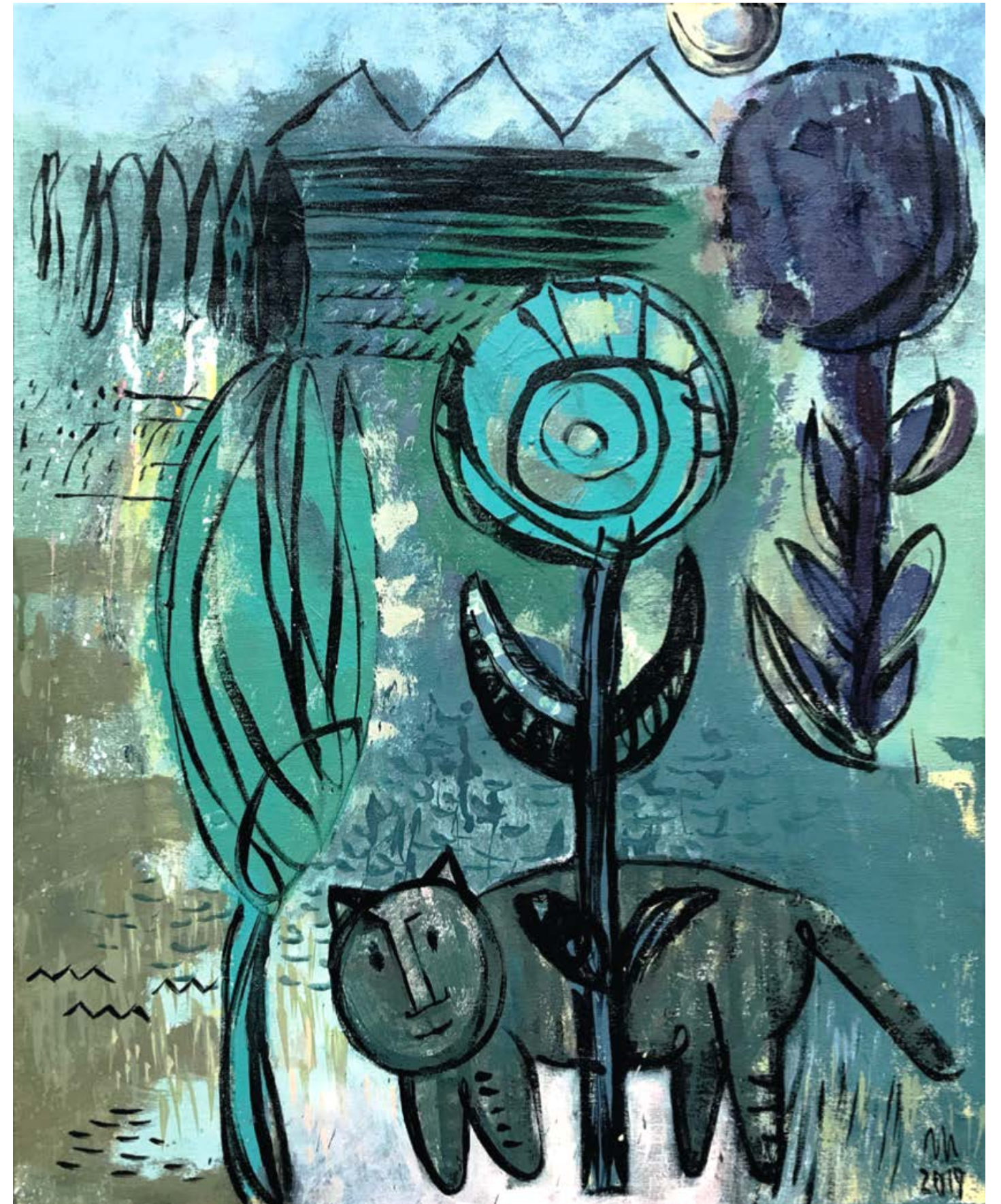
Müller’s extraordinary works are complex ones. They put an emphasis on expressing feelings by processing colors, shapes, and textures in a highly personalized way. These sensations are manifested through poetically suggestive narratives that allow us to see the world through the original responses of an artist unconstrained by preconceived norms and conventions.

David Zemmerman is an art critic living and working in Manhattan.





*Land and machine, 2023, acrylic, ink on canvas, 19.5" x 27.5"*



*At night all cats are grey, 2019, acrylic on canvas, 19.5" x 23.5"*





Bird with house, 2023, acrylic on canvas, 11.8" x 15.7"



Vacation in the country, 2024, acrylic on canvas, 19.7" x 27.5"



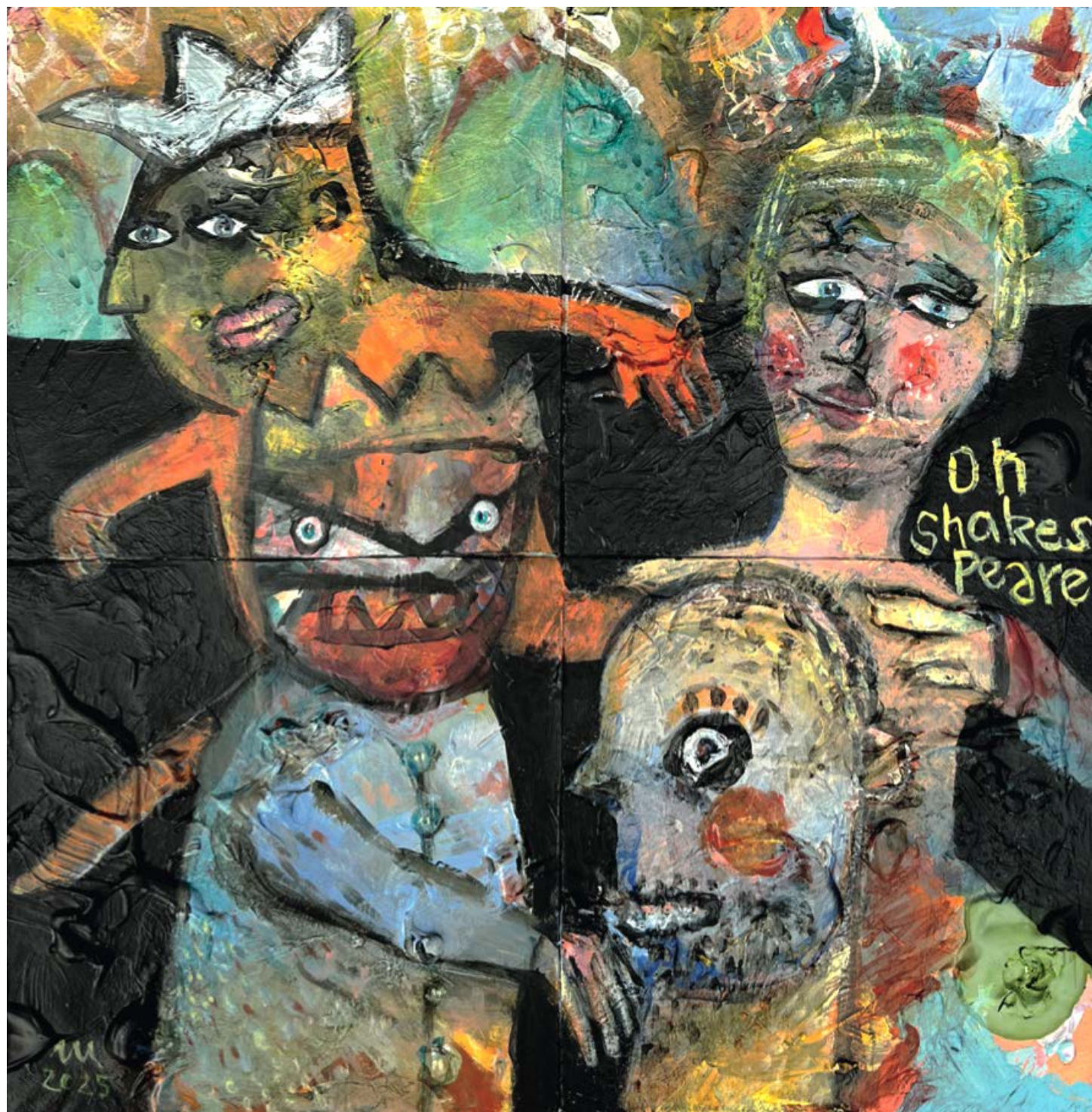


*Three men in four corners, 2024, acrylic on canvas, 11.8" x 11.8"*

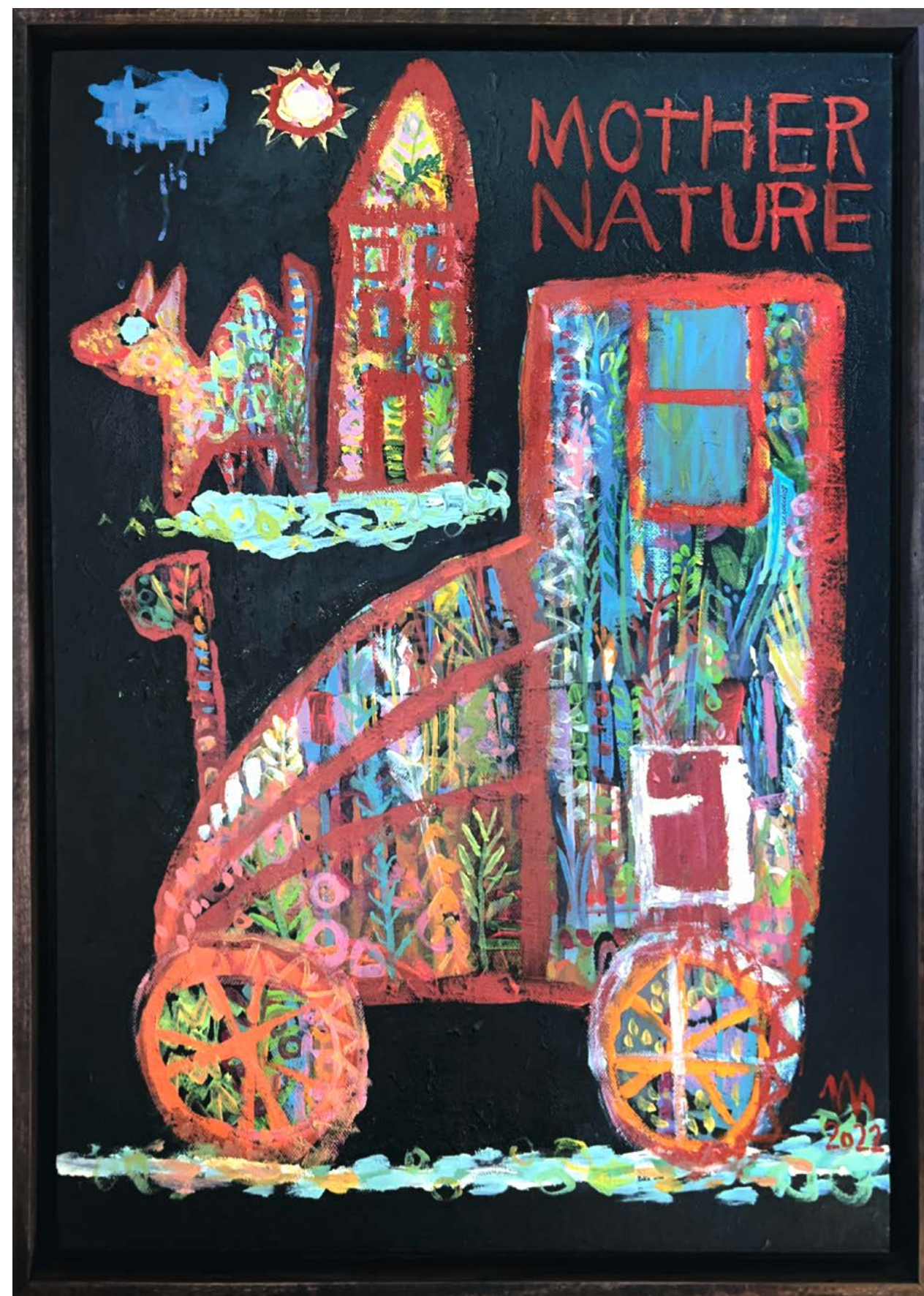


*Dandelions, 2018, acrylic on canvas, 39.3" x 25.9"*





*Oh, Shakespear*, 2025, acrylic on canvas, 44.8" x 31.4"

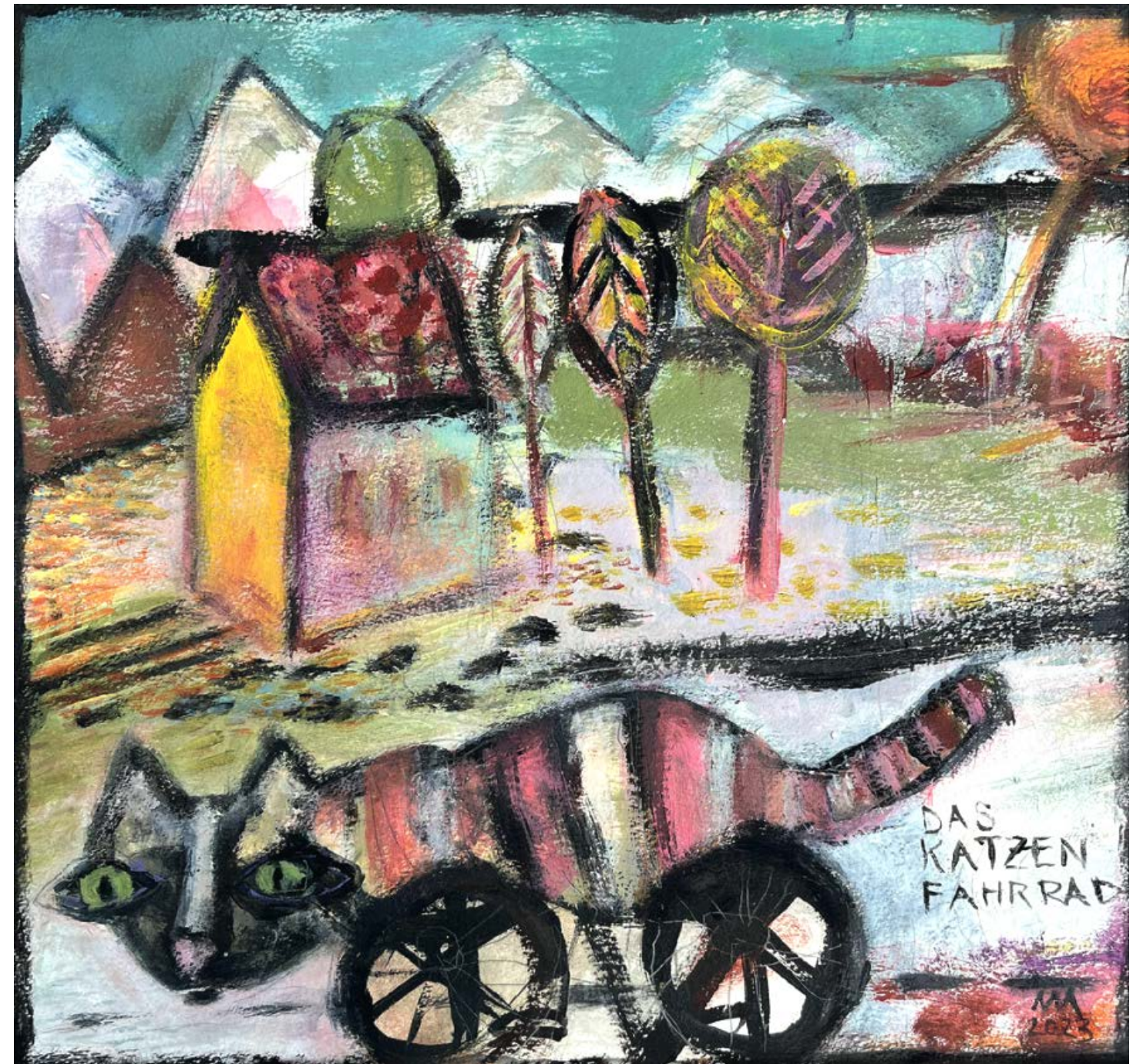


*Mother Nature*, 2022, acrylic on canvas, 15.7" x 23.6"





*Solidarity with a royal poodle, 2024, acrylic on canvas, 39.3" x 25.9"*



*Infinite Abundance, acrylic on canvas, 38.9" x 23.2"*





*Paradiso*, 2023, acrylic on canvas, 15.7" x 19.7"



*The Puppeteer*, 2025, acrylic on canvas, 11.8" x 15.7"



This catalog has been published in conjunction with the exhibition of work by Tina Müller.  
All rights reserved. No part of this catalogue may be reproduced in any form or by any electronic and mechanical means, including information storage or retrieval systems, in part or in whole, without permission in writing from the publisher, except by a reviewer who may quote passages in a review.

Copyright © 2025 Artifact Projects  
Copyright © 2025 Images:Tina Müller  
Design: Artelligent Graphics



